

DustBuddie®

FOR DEMO HAMMERS

OWNER'S MANUAL

MODEL#: D2327



WARNING - If using this product in the removal of lead paint, asbestos, or other hazardous materials, a certified HEPA vacuum must be used. The removal of old paint, tile, or other building materials may generate dust or fumes that contain lead or asbestos, exposure to which may cause brain damage, cancer, or other adverse health effects, especially in young children and pregnant women. Follow all federal, state and local laws including the US Environmental Protection Agency's Renovation, Repair and Painting (EPA RRP) laws, similar state laws and Occupational Health and Safety Administration (OSHA) regulations. This product meets EPA RRP requirements ONLY if it is used with a Certified HEPA vacuum specifically designed for hazardous materials. DO NOT use vacuums that are advertised for collecting "fine dust" and/or "allergens" to collect hazardous dust particles. While they may contain a HEPA filter, the system does not provide the level of protection that Certified HEPA vacuum does. When working with non-hazardous dust, any high-quality shop-type vacuum can be used with this shroud. This product also complies with Table 1 of the OSHA silica rule when used with a vacuum rated at 130 CFM and filter cleaning mechanism.



WARNING - This product can expose you to chemicals including carbon black, which is known to the State of California to cause cancer, and benzene, methyl which is known to the state of California to cause birth defects or other reproductive harm. For more information go to www.P65Warnings.ca.gov.

Dustless
TECHNOLOGIES

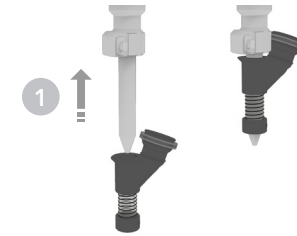
★ MADE IN THE USA ★

LIVE CUSTOMER SUPPORT & SERVICES:
1.800.568.3949 Toll-free in the U.S.
dustlesstools.com

SETUP

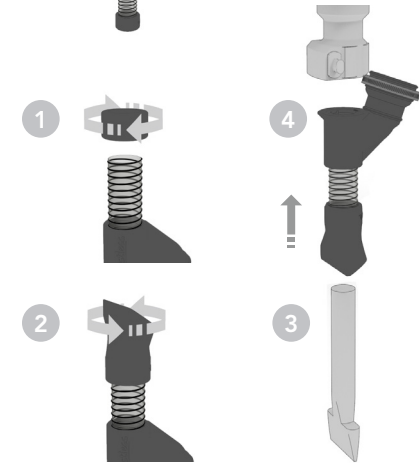
POINT BIT INSTALL:

- 1) Slide shroud onto bit up to demo hammer chuck.



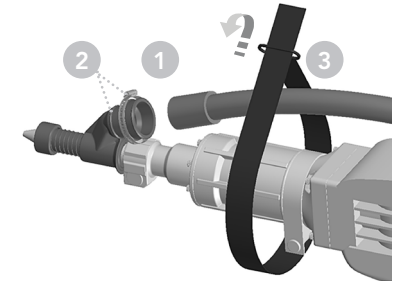
WIDE CHISEL BIT INSTALL:

- 1) Untwist standard end attachment in clockwise direction off of shroud.
- 2) Twist chisel end attachment onto shroud in counterclockwise direction.
- 3) Remove bit from demo hammer.
- 4) Insert bit through shroud into demo hammer chuck.



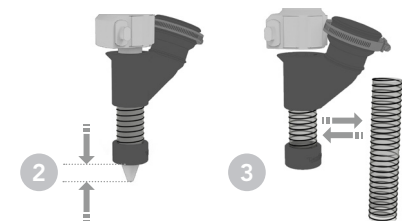
ATTACHING VACUUM HOSE:

- 1) Insert vacuum hose cuff into shroud.
- 2) Tighten hose clamp around vacuum hose cuff. For smaller hose cuffs, move clamp from upper step to lower step.
- 3) Secure hose to tool using the provided hook-and-loop strap.



USAGE

- 1) Minimum Required CFM: 130
- 2) End of the shroud should remain as close to the end of the bit as possible.
- 3) Shroud hose segment may be replaced with the included, longer segment as needed.



SUPPORT

Limited Warranty - At Dustless we stand behind what we build. We warranty our Wet/Dry, HEPA, Lynx and our Pro Series vacuums to the original purchaser against defects in materials or workmanship for a period of three (3) years after the date of original purchase and ten (10) years on our Cougar Ash Vacuums after the date of original purchase. Our shrouds and accessories are warranted for 90 days from the date of purchase. This limited warranty does not cover claims resulting from (I) misuse, (II) neglect, (III) modification and/or (IV) failure to follow instructions.

OM092_0920_D2327