

# CutBuddie® LT

## FOR HAND GRINDERS

### OWNER'S MANUAL

MODEL#: D0730



**WARNING** - If using this product in the removal of lead paint, asbestos, or other hazardous materials, a certified HEPA vacuum must be used. The removal of old paint, tile, or other building materials may generate dust or fumes that contain lead or asbestos, exposure to which may cause brain damage, cancer, or other adverse health effects, especially in young children and pregnant women. Follow all federal, state and local laws including the US Environmental Protection Agency's Renovation, Repair and Painting (EPA RRP) laws, similar state laws and Occupational Health and Safety Administration (OSHA) regulations. This product meets EPA RRP requirements ONLY if it is used with a Certified HEPA vacuum specifically designed for hazardous materials. DO NOT use vacuums that are advertised for collecting "fine dust" and/or "allergens" to collect hazardous dust particles. While they may contain a HEPA filter, the system does not provide the level of protection that Certified HEPA vacuum does. When working with non-hazardous dust, any high-quality shop-type vacuum can be used with this shroud. This product also complies with Table 1 of the OSHA silica rule when used with a vacuum possessing a filter cleaning mechanism and rated at 25 CFM for every inch of blade diameter being used.



**WARNING** - This product can expose you to chemicals including dichloromethane, which is known to the State of California to cause cancer, and isopropylidenediphenol (BPA) which is known to the state of California to cause birth defects or other reproductive harm. For more information go to [www.P65Warnings.ca.gov](http://www.P65Warnings.ca.gov).

**Dustless**<sup>®</sup>  
TECHNOLOGIES

★ MADE IN THE USA ★

**LIVE CUSTOMER SUPPORT & SERVICES:**  
1.800.568.3949 Toll-free in the U.S.  
[dustlesstools.com](http://dustlesstools.com)

## SETUP

**1)** Remove power source from hand grinder: unplug cord or remove battery

**2)** Remove the existing scatter shield and cutting blade if applicable

**3)** Place the shroud brackets over the grinder collar and seat bracket ribs in groove of collar

**4)** Tighten hose clamp partially. Ensure end of clamp continues into top bracket

**5)** Center the shroud on the arbor

**6)** Tighten the hose clamp fully

**7)** Install the arbor adapter, cutting blade, and arbor nut

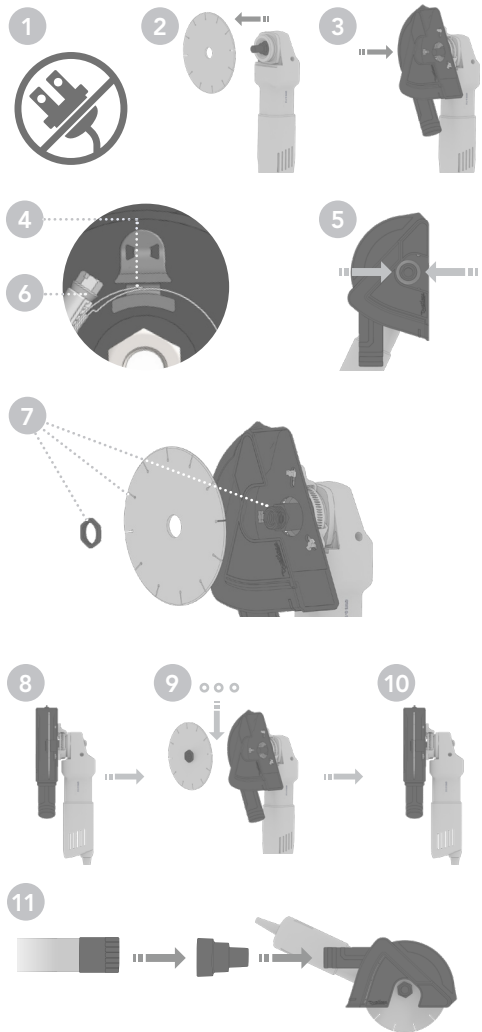
**8)** Check to make sure the blade is in the center of the shroud

**9)** If the blade needs centering, remove arbor adapter and insert spacers as needed

**10)** Install the arbor extender, the blade, and tighten the arbor nut

**11)** Replace or install the appropriate hose cuff or adapter on your vacuum hose

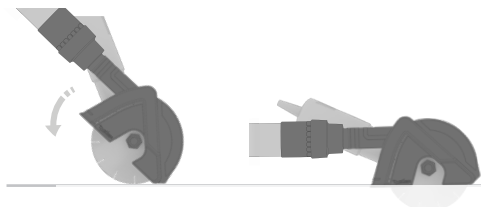
**12)** Attach the vacuum hose



## USAGE

**1)** Minimum Required CFM: 25 per in. of blade or cutting wheel diameter

**2)** When initiating cut, touch the nose of the shroud to ground before plunging. Some dust may escape during initial plunge.



## SUPPORT

**Limited Warranty** - At Dustless we stand behind what we build. We warranty our Wet/Dry, HEPA, Lynx and our Pro Series vacuums to the original purchaser against defects in materials or workmanship for a period of three (3) years after the date of original purchase and ten (10) years on our Cougar Ash Vacuums after the date of original purchase. Our shrouds and accessories are warranted for 90 days from the date of purchase. This limited warranty does not cover claims resulting from (I) misuse, (II) neglect, (III) modification and/or (IV) failure to follow instructions.

OM093\_0121\_D0730