

Dustless

DustDroid 300

DustlessVac®

Save Time
& Money in
Clean Up

Model H0302



OSHA
SILICA RULE
EPA RRP



Without Dust Collection



With Dust Collection



Features:

- Cyclone separation technology extends the life of HEPA filters and improves filtration and collection
- Industrial non-marking wheels make it easy to maneuver the vacuum and won't damage the surface you're working on
- Convenient 110v motor means you can find power anywhere
- Durable steel construction for quality that will last job after job
- Large collection containers mean you'll spend more time working and less time emptying bags
- Reverse-pulse manual filter cleaning keeps filters clean and suction strong without using solenoids that need to be replaced

DustDroid 300 includes:

- | | |
|---|-----------------------------------|
| (1) 30-gallon collection drum (wheeled) | (1) Certified HEPA Filter |
| (1) 20-gallon collection drum | (1) Vac/Tool Pod set |
| (1) 2.5" x 25' hose | (1) Metal pallet mounting bracket |
| (1) Hose bag | |

★ Designed and Assembled in the US ★

Dustless
TECHNOLOGIES

800.568.3949
www.DustlessTools.com

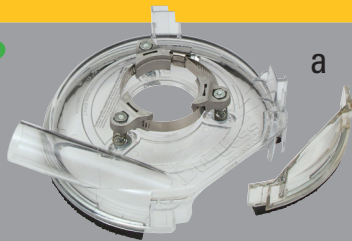
Dustless® OSHA Silica Rule Compliance Guide

Many jobs create hazardous silica dust. For those jobs, **OSHA** requires two items:

- ✓ A commercially available dust collection shroud attached to the worker's tool
- ✓ A 99% efficient dust collection system that includes a filter cleaning mechanism

Dustless Technologies makes the **most universal** and **most cost-effective** OSHA-compliant dust collection systems on the market. No need to replace your existing tools!

Dustless offers OSHA-compliant systems for many tools and jobs



a



b



c



DustDroid 300
Industrial HEPA
Vacuum
(Model H0302)
300 CFM

- a) DustBuddie® for grinding with angle grinders
2 sizes available - 5" and 7"
- b) CutBuddie® for cutting and tuck-pointing
with angle grinders
2 sizes available - 5" and 7"
- c) DustBuddie for cutting with
gas powered saws

...and more!

OSHA's HEPA Requirements

OSHA requires a High-Efficiency Particulate Air (HEPA) vacuum for **housekeeping and vacuuming drill holes**. It is advised that each construction crew has at least one HEPA vacuum on site, such as the DustDroid 600 DustlessVac (H0601).



NOTE: For some jobs, OSHA requires personal respiratory protection of APF 10 - 25 (regardless of dust control systems).