

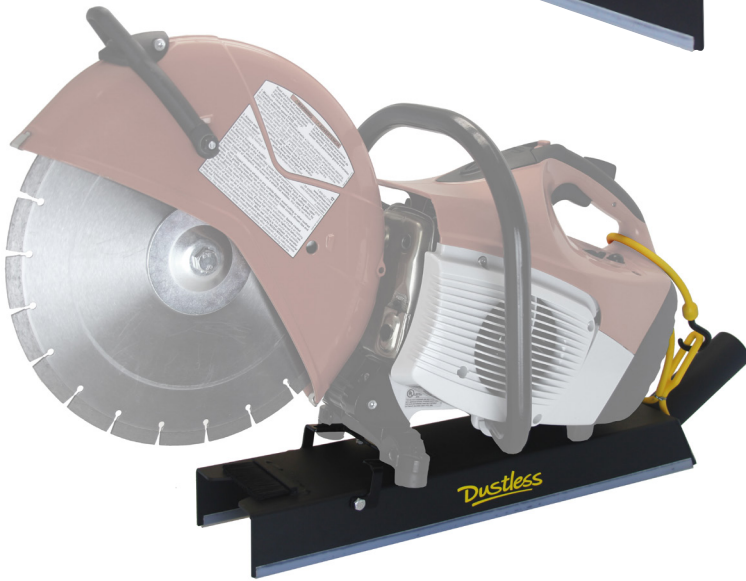
Dustless

DustBuddie®

for cutting flat concrete
with high speed gas saws

Save Time
& Money in
Clean Up

Model D0084



Features:

- Wide mouth & brush for maximum dust collection at the point of origin
- **Universal bracket** fits most gas-powered saws
- Polyurethane sliders won't damage concrete and moves easily along surface
- Clear line-of-sight provides unobstructed view of the blade for precise cutting
- Convenient hose port fits standard 2" cuff sizes
- Lightweight, durable metal construction won't add weight to the saw

DustBuddie includes:

- (1) shroud
- (1) mounting bracket and hardware
- (1) bungee fastener

Dustless
TECHNOLOGIES

Without Dust Collection



With Dust Collection



★ Designed & made in the US ★

800.568.3949
www.DustlessTools.com

Dustless® OSHA Silica Rule Compliance Guide

When cutting with high-speed power saws, **OSHA** requires one of two methods of dust control on the job site:

- ✓ **DRY:** Objective data from the manufacturer must prove that a manufacturer's solution is viable
- or
- ✓ **WET:** Use an integrated water delivery system to suppress dust. The EPA requires that the slurry produced must be cleaned up and properly disposed.

Dustless Technologies makes the **most universal** and **most cost-effective** OSHA-compliant dust collection systems on the market. No need to replace your existing tools!

- ✓ Third-party objective data confirms that using the set up shown below is a compliant solution. For more information, visit **www.DustlessTools.com** or call 800-568-3949.

When dry-cutting flat concrete or pavement with high-speed gas saws



**The most affordable option is to combine two Wet+Dry DustlessVacs (D1603). However, OSHA requires a HEPA vacuum (D1606) for housekeeping tasks and for vacuuming drill holes.*

- ✓ When wet-cutting with high-speed gas saws, slurry must be cleaned and properly disposed.

Dustless Slurry Vac®
(Model H0904)
55 Gallon Capacity



NOTE: When cutting with the above dry-cutting setup, OSHA requires **APF 10** for shifts up to 4 hours and **APF 25** for shifts greater than 4 hours. **APF 10** includes half masks and some dust masks. **APF 25** includes powered air-purifying respirators (PAPR). Consult your safety equipment supplier for details