

# Dustless<sup>®</sup>

## DustlessVAC<sup>®</sup>

### OWNERS MANUAL

D16 Series



This appliance is intended for commercial and household use.



**Dustless**  
TECHNOLOGIES

★ DESIGNED AND ASSEMBLED IN THE USA ★

**LIVE CUSTOMER SUPPORT & SERVICE:**  
1.800.568.3949 Toll-free in the U.S.  
dustlesstools.com  
PATENT NO. 5954863 & 5704956

# IMPORTANT SAFETY INSTRUCTIONS

IMPORTANTES MEDURES DE SECURITE  
IMPORTANTE PARA SU SEGURIDAD

## SAVE THESE INSTRUCTIONS CONSERVER CES INSTRUCTIONS GUARDAR ESTAS INSTRUCCIONES

**NOTE:** The reading and understanding of the Owner's Manual is imperative prior to operating this machine. If you or your operator(s) cannot read English, have this manual explained fully before attempting to operate this machine. Si Ud. o sus operadores no pueden leer el inglés, el contenido completo de este manual debe ser explicado antes de intentar operacion de esta máquina.

*When using an electrical appliance, basic precautions should always be followed, including the following:*

### WARNING

- **WARNING:** To reduce the risk of fire, electric shock, or injury, do not expose to rain. Store indoors.
- **WARNING:** Commercial users must be trained, qualified and certified in the collection of hazardous materials such as lead, asbestos, mold, silica or other hazardous material prior to collecting it in the vacuum.
- **WARNING:** For Household use, collection of hazardous materials such as lead, asbestos, mold, silica or other hazardous materials must be done only after you have been trained by a certifying body, or by a licensed and trained commercial professional in the area of hazardous material. Use only as described in this manual. Use only manufacturer's recommended attachments.
- Do not put any object into openings. Do not use with any opening blocked; keep free of dust, lint, hair, and anything that may reduce air flow.

### WORK AREA SAFETY

- Do not operate vacuum in explosive atmospheres. Sparks from static electricity or the motors may ignite dust or fumes.

### ELECTRICAL SAFETY

- Connect to a properly grounded outlet. See grounding instructions.
- Do not leave appliance when plugged in. Unplug from outlet when not in use and before servicing.

### ELECTRICAL SAFETY cont

- Electrical components are not user serviceable. Refer all service to a qualified repair technician.
- Do not handle plug or operate vacuum with wet hands.

### PERSONAL SAFETY

- Do not allow to be used as a toy. Close attention is necessary when used by or near children.
- Do not change filters, clean the unit, or empty the barrel until the plug has been disconnected from the electrical outlet.
- Use special care when emptying heavily loaded barrels.
- Keep hair, loose clothing, fingers and all parts of body away from openings and moving parts. There is a risk of injury through getting stuck or being drawn into moving machinery.
- Use extra care when working on stairs.
- Injury to the eyes and/or body can occur if protective clothing and/or equipment is not worn. Always wear safety goggles, protective clothing, hearing protection, and a dust mask. Exposure to high noise levels can cause hearing loss or impairment. Wear OSHA-approved hearing protection when using this vacuum.

### TOOL USE AND CARE

- Always check the filters before each use. Do not use without a dust collection bag and filters in place.
- Do not use with damaged cord or plug.
- If appliance is not working as it should, has been dropped, damaged, left outdoors, or dropped into water, return it to a service center.
- Do not pull or carry by the cord, use cord as a handle, close a door on cord, or pull cord around sharp edges or corners. Do not run vacuum over cord. Keep cord away from heated surfaces.
- Do not unplug by pulling on cord. To unplug, grasp the plug, not the cord
- Turn off all controls before unplugging.
- Take notice of all safety and hazard notices on the vacuum.
- All safety and hazard notices on the vacuum must be kept complete and legible.
- Changes, add-ons, or conversions of the vacuum which might have an influence to the safety of the vacuum must not be undertaken without the permission of the manufacturer. This applies in particular to the fitting and adjustment of safety devices and to welding on major and load-bearing parts.

### TOOL USE AND CARE cont

- In the event of operational malfunction the vacuum must be shut down immediately. The malfunction must be rectified before starting the vacuum again.
- The dust bin of the dust collector has to be emptied before transportation.
- Should dust begin to blow out of the vacuum, it must be shut down, cleaned (including the motor housing) and the problem fixed before returning to service. Failure to do so could put dangerous dust in the air and will void the warranty.

### SPECIFIC SAFETY RULES

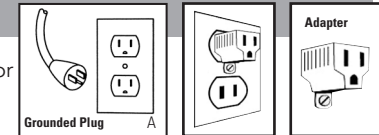
- Do not use to pick up flammable or combustible liquids, such as gasoline or oil in an area where they may be present.
- Do not pick up any objects that are burning or smoking, such as cigarettes, matches, or hot ashes.
- Dispose of the dust so that you meet the requirements of local regulations.

### GROUNDING INSTRUCTIONS:

This appliance must be grounded. If it should malfunction or break down, grounding provides a path of least resistance for electric current to reduce the risk of electric shock. This appliance is equipped with a cord having an equipment-grounding conductor and grounding plug. The plug must be inserted into an appropriate outlet that is properly installed and grounded in accordance with all local codes and ordinances.

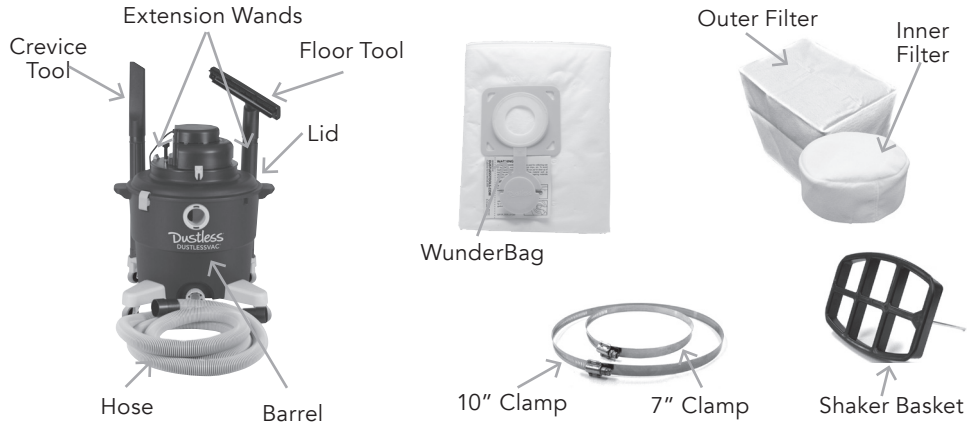
**WARNING** - Improper connection of the equipment-grounding conductor can result in a risk of electric shock. Check with a qualified electrician or service person if you are in doubt as to whether the outlet is properly grounded. Do not modify the plug provided with the appliance – if it will not fit the outlet, have a proper outlet installed by a qualified electrician.

This appliance is for use on a nominal 120-V circuit, and has a grounded plug that looks like the plug illustrated in sketch A. A temporary adapter that looks like the adapter illustrated in sketches B and C may be used to connect this plug to a 2-pole receptacle as shown in sketch B if a properly grounded outlet is not available. The temporary adapter should be used only until a properly grounded outlet can be installed by a qualified electrician. The green colored rigid ear, lug, or the like extending from the adapter must be connected to a permanent ground such as a properly grounded outlet box cover. Whenever the adapter is used, it must be held in place by a metal screw. Exception: In Canada, the use of a temporary adapter is not permitted by the Canadian Electrical Code, C22.1.

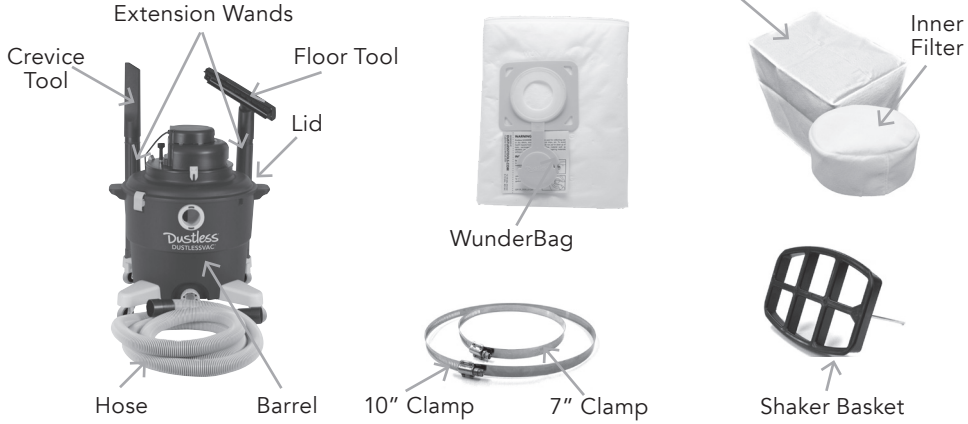


**IN THE BOX**

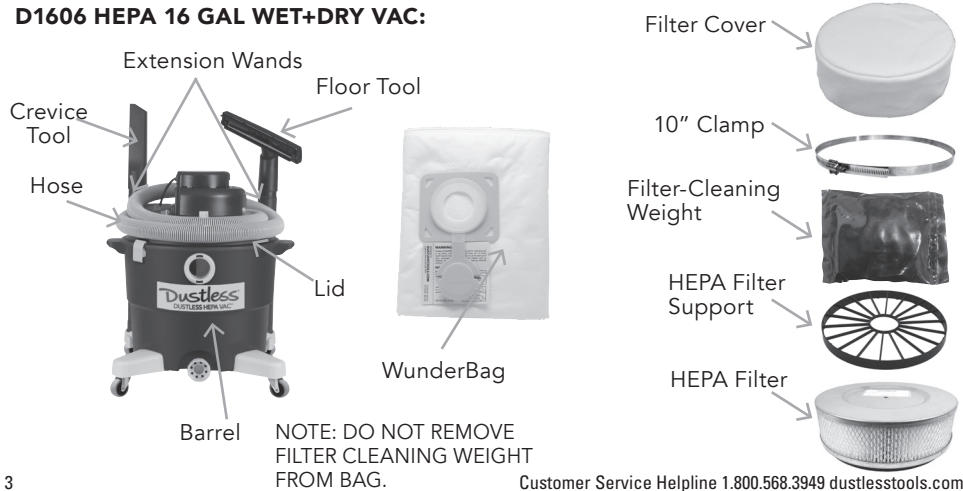
**D1603 16 GAL WET+DRY DUSTLESSVAC WITH 12 FT. HOSE:**



**D1605 16 GAL WET+DRY VAC-FOREIGN:**



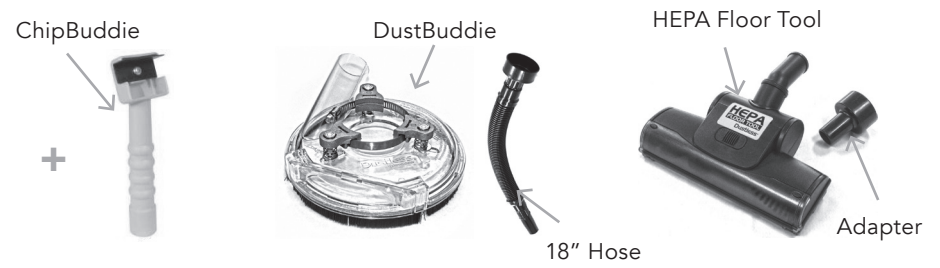
**D1606 HEPA 16 GAL WET+DRY VAC:**



Customer Service Helpline 1.800.568.3949 dustlesstools.com

**IN THE BOX cont**

**D1608 RENOVATE RIGHT EPA HEPA KIT:**



**16250 SHERWIN WILLIAMS HEPA RRP KIT:**



**16500 DUSTLESS EPA LEAD SAFE COMPLIANCE:**



**D1607 HEPA - 240V 16 GAL WET+DRY VAC:**



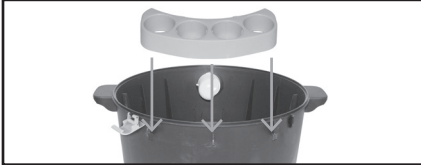
Customer Service Helpline 1.800.568.3949 dustlesstools.com

## SETUP

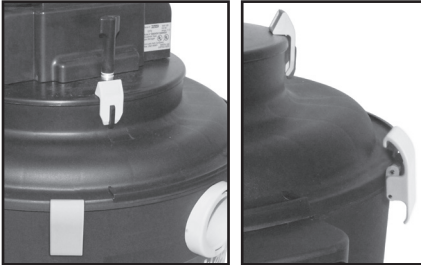
1. Remove entire contents of box.
2. Slide legs into slots with the legs with the hooks in the back. Screw in screws.



3. Attach tool tray.



4. Place intermediate on barrel. Line Clamps up with the raised portion of the intermediate and secure in place.



5. Slide one end of the hose into the port. Slide desired attachments on to the other end of the hose.



## WUNDERBAG INSTALLATION

1. Place the cardboard collar with the rubber gasket securely over the intake port on the inside of the barrel.



2. Reach inside the port and with your fingers press cardboard tight and secure around port.



## WET PICKUP

1. Vacuum should be emptied of any dry waste. Motor filters must remain in place. Note: Should filters become wet, dry both filters thoroughly before continued use. WunderBag can remain in place when collecting small amounts of water but should be removed when collecting large amounts.
2. Connect hose and desired attachment.
3. After use or when barrel is full turn off vacuum and disconnect from outlet.

Note: When barrel is full the automatic shut-off mechanism will shut off vacuum pickup. When this happens, the motor will become noticeably higher pitch.

4. Empty barrel after each use by unscrewing drain cap. Drain is regulated so liquid can go from a drip to a full flow. Note: Hose can be put in the drain cap to drain up to 12 feet away.

Customer Service Helpline 1.800.568.3949 dustlesstools.com

## USAGE

### DRY PICKUP

1. Barrel should be emptied of any wet waste. Filters must remain in place.
2. Connect hose and desired attachment.
3. As suction is reduced stop to clean or replace filters. (Refer to Clean Filters or Filter Installation)
4. After use or when barrel is full turn off vacuum and disconnect from outlet.
5. Remove intermediate from barrel.
6. Empty barrel and/or remove WunderBag. Note: To avoid back strain, do not lift a full barrel/bag.
7. Empty barrel after each use to prevent any type of combustion.

### CLEAN FILTERS (REGULAR WET+DRY)

1. Always turn off the vacuum before cleaning the filters.
2. Keep the lid closed on the barrel, do not remove the lid.
3. Remove the black agitator rod cover from the lid.



4. Lift the agitator rod slightly and rapidly shake it from side to side five times so the basket hits the sides of the outer filter to knock off the layer of dust. Note: Pushing down may push the filter off.

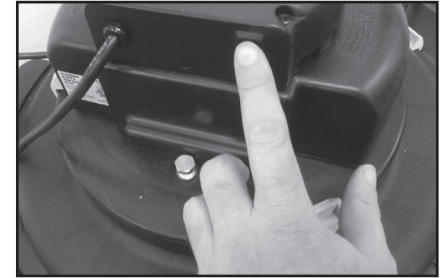


5. Replace the black agitator rod cover to the top of the lid.

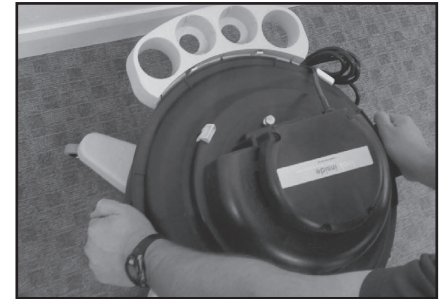


### CLEAN FILTERS (HEPA WET+DRY)

1. Turn the vacuum off and wait 5 seconds after motor comes to a stop. Repeat 5 times. This allows weight to expand filter cover and release dust.



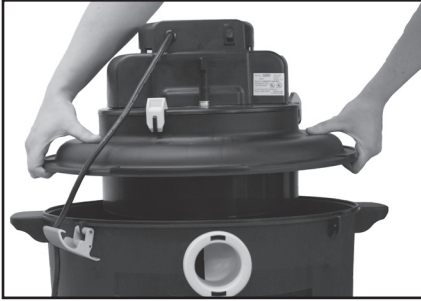
2. For increased effectiveness, move the vacuum vigorously side to side and back and forth while shut down. Plugging and unplugging the hose while running may also restore some suction.



3. THOROUGH FILTER COVER CLEANING Hand or machine wash the filter cover. Let it line dry. DO NOT PUT IN THE DRYER.
4. Filter covers may also be vacuumed off to restore suction.
5. HEPA filter should be discarded, DO NOT attempt to clean HEPA filter. Proper installation and use of the Wunderbag and filter cover will maximize the life of the HEPA filter.

**CHANGING WUNDERBAGS**

1. Disconnect the vacuum from outlet.
2. Remove intermediate.



3. Seal and remove full WunderBag. Note: To avoid back strain, do not lift a full bag.



4. Install new WunderBag. (Refer to WunderBag Installation)

**STORAGE**

1. Disconnect from outlet
2. Empty barrel.
3. Rinse barrel thoroughly and wipe out.
4. Store hose and attachments.



**EXTENSION CORDS**

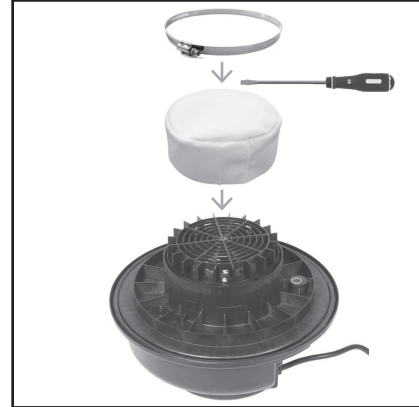
When using the appliance at a distance where an extension cord becomes necessary, a 3-conductor grounding cord of adequate size must be used for safety, and to prevent loss of power and overheating. Use the table that follows to determine A.W.G. wire size required. To determine ampere rating of your vacuum, refer to nameplate located on rear of motor cover. Before using appliance, inspect power cord for loose or exposed wires and damaged insulation. Make any needed repairs or replacements before using your appliance. Use only three-wire outdoor extension cords which have three-prong grounding-type plugs and three-pole receptacles which accept the extension cords plug. When vacuuming liquids, be sure the extension cord connection does not come in contact with the liquid.

VOLTS	TOTAL LENGTH OF EXTENSION CORD IN FEET			
	25	50	100	150
120V				
Ampere Rating More Than	AWG			
0 - 6	18	16	16	14
6 - 10	18	16	14	12
10 - 12	16	16	14	12
12 - 16	14	12	Not Recommended	

NOTE: STATIC SHOCKS ARE COMMON IN DRY AREAS OR WHEN THE RELATIVE HUMIDITY OF THE AIR IS LOW. THIS IS ONLY TEMPORARY AND DOES NOT AFFECT THE USE OF THE APPLIANCE. TO REDUCE THE FREQUENCY OF STATIC SHOCKS IN YOUR HOME, THE BEST REMEDY IS TO ADD MOISTURE TO THE AIR WITH CONSOLE OR INSTALLED HUMIDIFIER.

**FILTER INSTALLATION (REGULAR WET+DRY)**

1. Place the inner filter (small white filter) over the filter support cage and attach with the 7" hose clamp. Tighten the clamp with a screw driver.



2. Place the shaker basket rod in the brass hole. The basket should rest on top of the filter.

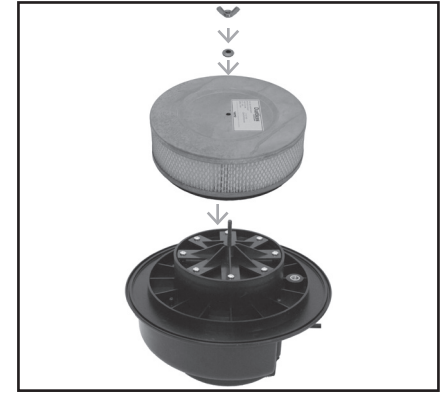


3. Place the outer filter over the shaker basket and around the raised lip on the lid (lip is 1" from edge of the lid) attach with the 10" hose clamp. Tighten the clamp with a screw driver.



**FILTER INSTALLATION (HEPA WET+DRY)**

1. Place the HEPA filter over the crosspiece stud and slide on the washer. Screw on the wing nut to compress the washer and filter seal.



2. Place the HEPA filter cover support on the HEPA filter.



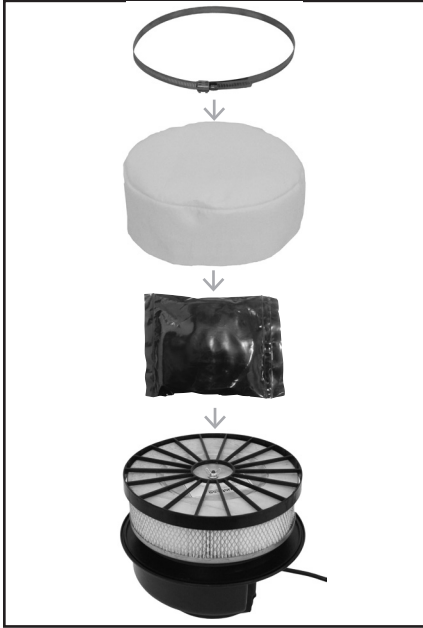
3. Place the weighted filter cleaning plate on HEPA filter support.



NOTE: DO NOT REMOVE FILTER CLEANING WEIGHT FROM BAG.

**FILTER INSTALLATION (HEPA WET+DRY) cont.**

4. Place the filter-cleaning weight on the filter cover support, then place the HEPA filter cover over the HEPA filter cover support and HEPA filter. Place the 10" hose clamp over the HEPA filter cover so it rests on the metal ring of the filter. Tighten the clamp with a screw drive.



**RECOMMENDED REPLACEMENT INTERVALS**

Every 6 months: Replace HEPA Filters

As needed: Replace WunderBag

Note: In order to prevent unnecessary downtime, it is recommended that you keep the following items in stock:

- 1X HEPA Filters
- 2X WunderBags
- Motor Brushes

NOTE: DO NOT REMOVE FILTER CLEANING WEIGHT FROM BAG.

- Adjustments, servicing, and inspection work and inspection intervals specified in these Operating Instructions, as well as any information on the replacement of parts and systems of the vacuum must be undertaken and complied with.
- These activities can only be undertaken by qualified personnel.
- Make sure that electrical components used for replacement comply with the original parts and are correctly adjusted if necessary.
- Before performing any maintenance, place the vacuum in the safety off position which is the position of the vacuum when it cannot generate any hazard. To do this, switch off the dust collector, pull out plug, and secure the vacuum against unintended start up.
- Inspection intervals and times for recurring checks specified in these Operating Instructions must be complied with.

QUESTION	ANSWER
Why is the vacuum blowing dust?	<ul style="list-style-type: none"> <li>• Check filter(s) for holes and that they are securely in place.</li> <li>• WunderBag may not be securely in place.</li> </ul>
Why have I lost suction?	<ul style="list-style-type: none"> <li>• The drain cap may be open.</li> <li>• Check and clear any obstruction in the hose or attachments.</li> <li>• Filters may need to be cleaned/replaced.</li> <li>• Agitator rod cover/brass plug may need tightening.</li> <li>• WunderBag may be full and need to be replaced.</li> <li>• Hose may have a split and needs to be replaced.</li> </ul>
Why are my filters getting wet?	<ul style="list-style-type: none"> <li>• Barrel should be empty before use.</li> <li>• Make sure the drain cap is clean, has an o-ring and is screwed on tight.</li> </ul>
Will the filter(s) meet current EPA & OSHA guidelines for asbestos and mold removal?	<ul style="list-style-type: none"> <li>• The outer and inner filters do not.</li> <li>• The HEPA filter does.</li> </ul>
Why does the WunderBag say "do not use for toxic materials including lead"?	<ul style="list-style-type: none"> <li>• The WunderBag must be used in line with a Dustless HEPA vacuum to guarantee proper filtration.</li> </ul>



**THREE-YEAR LIMITED WARRANTY**

At Dustless Technologies, we stand behind what we build. We warrant this product to the original retail purchaser against defects in materials or workmanship for a period of three years after date of purchase. This limited warranty does not cover claims resulting from: (I) misuse (II) neglect (III) modification (IV) failure to follow instructions.

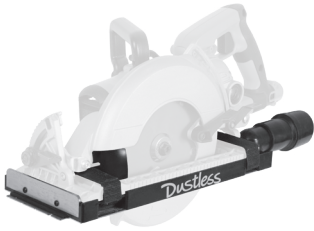
**WARRANTY CARD**

Please register your product online at [dustlesstools.com](http://dustlesstools.com) within 90 days of purchase.

**WARRANTY CLAIMS**

For warranty or returns with any of our products, please contact your place of purchase. Technical support is available at (800)568-3949 or [orders@dustlesstools.com](mailto:orders@dustlesstools.com).

OTHER PRODUCTS AVAILABLE (not to scale)



DustBuddie for Circular Saws  
Model #D4000



DustBuddie for Hand Grinders  
Model #D1835



CutBuddie for Hand Grinders  
Model #D1730



BitBuddie for Drilling  
Model #D1900



SawBuddie for Reciprocating Saws  
Model #D2415



DustBuddie for DemoHammers  
Model #D2327



DustBuddie for DemoHammers  
Model #D1505